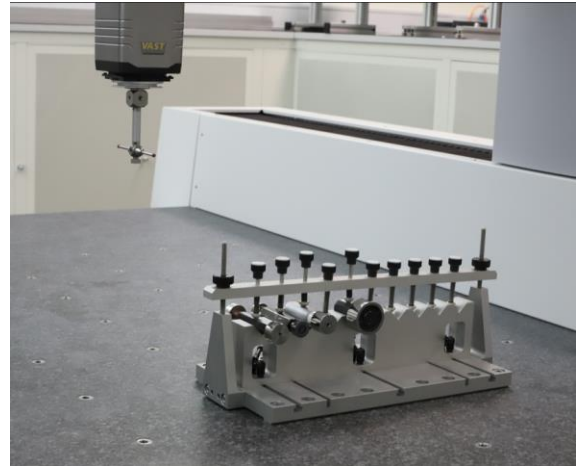


AfM GaugeCheck The automated gauge checking on a CMM

Don't be satisfied with less!



Customers

Our customers are companies with own CMM, who calibrate their gauges internal, as well as service companies, offering the calibration of gauges as a periodic service.

State-of-the-art

The effort in time and trained personnel for standard calibration of gauges and setting masters is very costly. Long-standing experience in handling of gauges and measuring devices is essential, in order to prevent the measuring result from user influences and errors.

Innovation

By using the new software solution **GaugeCheck** from AfM Technology, you will get the practice oriented tool for the automated palette measuring of gauges and masters on your ZEISS coordinate measuring machine with **CALYPSO**® software.

The loading and unloading of the gauges on the palette device as well as the automated creation of partfiles can be done offline. Gauge-Check generates a complete CNC file for **CALYPSO**®.

The calibration sequence follows the guideline according to **VDI/VDE/DGQ 2618**.

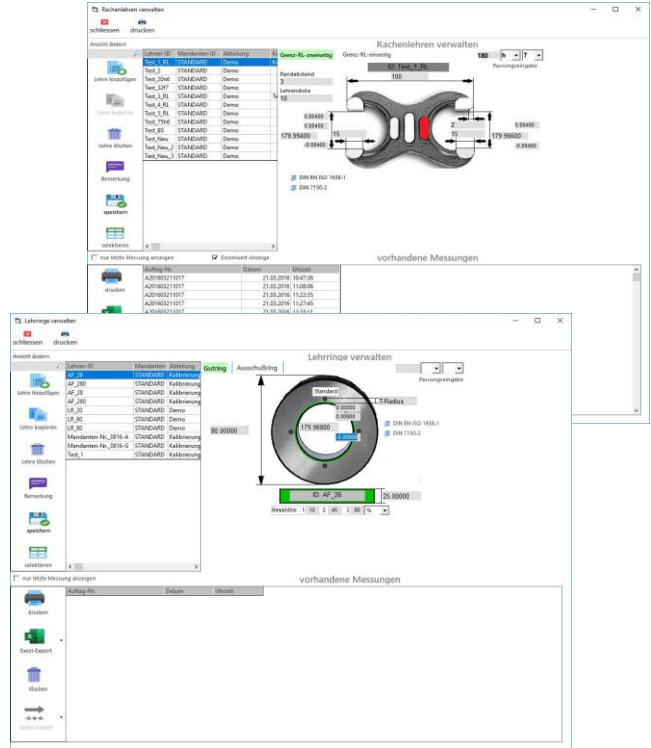
Following gauges can be checked automatically by the Gauge-Check module „Plain Gauges“:

- Plug Gauges Go and NoGo
- Internal limit Gauges (Plug Gauges D/E)
- Setting master plugs
- Ring gauges Go and NoGo
- Setting master rings
- Inspection pins
- Gauge blocks
- Snap Gauges
- Setting dimensions

The benefits to you:

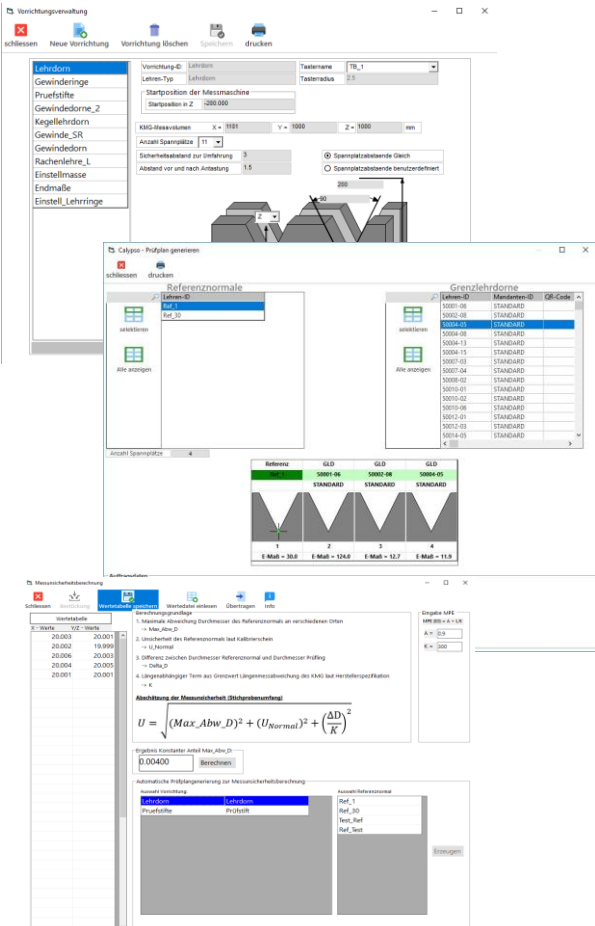
- Easy and safe use of the software
- No operator influence on the measuring result
- Universal clamping device for the different gauges
- Creation of partfiles and CNC programs works offline
- Automated generation of CALYPSO CNC programs
- Traceability to the National Standard by DAkkS calibrated reference gauges / masters
- Integrated calculation of gauge tolerances
- Integrated gauge and artefact management

Software Solutions for coordinate measuring machines (CMM)



Our product range

- Universal clamping devices for gauges / masters
- Training and installation service
- Interface for calibration management systems
- Customized interfaces also available
- Integration of existing gauges to the GaugeCheck database



AfM

ACCURACY FOR MACHINES

AfM Technology GmbH
 Gartenstraße 133
 73430 Aalen
 Germany
 Fon +49 (0) 73 61 88 96 08-0

www.afm-tec.de
 info@afm-tec.de